

FIVE RIVERS WARD

AREA	RESERVE	PAGE
Athol	Athol Recreation Reserve	2
	Athol Tennis Courts	4
	Athol Memorial Reserve	6
Dunrobin	Dunrobin Reserve	8
Garston	Garston Village Green	10
Hamilton Burn	Hamilton Burn Rest Area	12
Lumsden	Lumsden Recreation Reserve	14
	Lumsden Town Centre Reserve	16
Mossburn	Mossburn War Memorial Park	18

File: 3703/0090

Athol Recreation Reserve

Athol 1

Description

Location	East Road, Athol
Classification / Status	Recreation
Area (ha)	2.1575
Legal Description	Secs 10 & 11 Blk XXVII Town of Athol
Control	Athol Reserve Committee
Previous Management Plan	This District Wide Reserve Management Plan replaces the Draft Athol Reserves Management Plan
Hierarchy	Township
Adjacent Land	Athol Recreation Reserve is bounded on two sides by road and on the remaining two sides by open grazed land. The reserve is on Athol's north eastern boundary.
Facilities	One rugby field, clubrooms and changing sheds, floodlights
Acquisition	Sec 10 was first reserved in 1930 as a Railway Reserve and set aside as a reserve for recreational purposes in 1975. Sec 11 was set aside as a reserve for recreational purposes in 1930. In 1982 both Sec 10 and 11 were vested in the Southland District Council in trust for recreational purposes.

General Description

This reserve consists of an open grassed field used as a rugby field. Clubrooms and changing sheds occupy the northern end of the reserve. Some trees are planted along the eastern boundary.

Specific Policies

- Continue to maintain and develop Athol Recreation Reserve as an area of open space for organised sport and casual recreation.
- Camping is not permitted on Athol Recreation Reserve as per the Camping Bylaw (2000).

Future Development Potential

Suitable specimen trees on the boundary to enhance the reserve.



Athol Recreation Reserve

File: 3692/0031

Athol Tennis Courts

Athol 2

Description

Location	Athol-Five Rivers Highway
Classification / Status	Freehold
Area (ha)	0.0754
Legal Description	Lot 3 DP 13311
Control	Athol CDA
Previous Management Plan	This District Wide Reserve Management Plan replaces the Draft Athol Reserves Management Plan
Hierarchy	Township
Adjacent Land	Adjacent to the primary school, and residential properties.
Facilities	One tennis court, shelter planting, fenced.
Acquisition	Acquired in 1994 as an estate in fee simple

General Description

A good quality tennis court that is fully fenced and has been resurfaced in 1998, and adjacent to the primary school.

Specific Policies

- Continue to maintain Athol Tennis Courts as an area of open space for organised sport and casual recreation.

Future Development Potential

Develop a community management structure to oversee the future maintenance requirements of the tennis court.



Athol Tennis Courts

File: 3692/0022

Athol Memorial Reserve

Athol 3

Description

Location	Athol-Five Rivers Highway, Athol
Classification / Status	Freehold
Area (ha)	0.9361
Legal Description	Lot 1 DP 4554, Lot 1 DP 1556
Control	Athol CDA
Previous Management Plan	No
Hierarchy	Township
Adjacent Land	Adjacent to rural land and residential properties on Athol's western boundary. Opposite tennis court.
Facilities	Community Hall, picnic tables, stone walls, amenity planting and gravelled car park.
Acquisition	Freehold

General Description

Athol Memorial Reserve is an area of open space at the south entrance to Athol used as a picnic area and car parking for the adjacent Community Hall. Partly grazed by adjacent farm.

Specific Policies

- Continue to maintain and develop Athol Memorial Reserve as an area of open space for casual recreation and car parking for the adjacent Community Hall.
- Camping is not permitted on Athol Memorial Reserve as per the Camping Bylaw (2000).

Future Development Potential

Status quo.



Athol Memorial Reserve

File: 2363/0000

Dunrobin Reserve

Dunrobin 1

Description

Location	Mossburn - Wreys Bush Road
Classification / Status	Recreation
Area (ha)	0.4089
Legal Description	Sec 120 Wairaki SD
Control	Ward
Previous Management Plan	No
Hierarchy	Ward
Adjacent Land	This reserve is bounded on one side by the Aparima River and surrounded by farmland.
Facilities	Old and uninviting long drop, car parking.
Acquisition	Originally part of Dunrobin Station, it was acquired by the Wallace County Council in 1978. In 1983 it was classified as a recreation reserve.

General Description

This is a roadside picnic area adjacent to the Aparima River, surrounded by ornamental conifers, pines and poplars. A large part of the area used by public as access to the river is not part of the reserve. Many of the trees are old and have poor form. Shelter is required from the strong winds in the area.

Specific Policies

- Develop and maintain Dunrobin Reserve as an area of open space for casual recreation.

Future Development Potential

Prepare development plan for Dunrobin Reserve.
Replace trees with appropriate species that provide shelter and enhance the environment.
Replace the toilet.
Provide picnic tables.
Establish mowing contract.



Dunrobin Reserve

File:

Garston Village Green

Garston 1

Description

Location	Garston - Athol Highway (SH 6)
Classification / Status	Crown land to be acquired by Council
Area (ha)	Unknown
Legal Description	Under Survey
Control	Garston CDA
Previous Management Plan	No
Hierarchy	Township
Adjacent Land	Surrounded by road, and opposite residential properties.
Facilities	Toilets, playground, information kiosk, picnic tables, car parking.
Acquisition	The land is privately owned but administered by the Garston CDA.

General Description

This area of open space adjacent to SH 6 through Garston offers a pleasant backdrop to the township and provides good toilets, a playground, information kiosk and picnic tables for travellers set amongst specimen trees.

Specific Policies

- Continue to develop and maintain Garston Village Green as an area of open space for casual recreation and children's play.

Future Development Potential

Continue to develop and maintain the amenity plantings.
Ensure all play equipment meets the recommended New Zealand Safety Standards.



Garston Village Green

File: 2363/0000

Hamilton Burn Rest Area

Hamilton Burn 1

Description

Location	Wreys Bush - Mossburn Road
Classification / Status	Plantation Reserve
Area (ha)	5.1850 (part)
Legal Description	Sec 4 Blk III Centre Hill SD SO 2197
Control	Ward
Previous Management Plan	No
Hierarchy	Ward
Adjacent Land	Hamilton Burn Rest Area is adjacent to forestry plantings and surrounded by farmland on the Wreys Bush- Mossburn Road
Facilities	Amenity plantings
Acquisition	

General Description

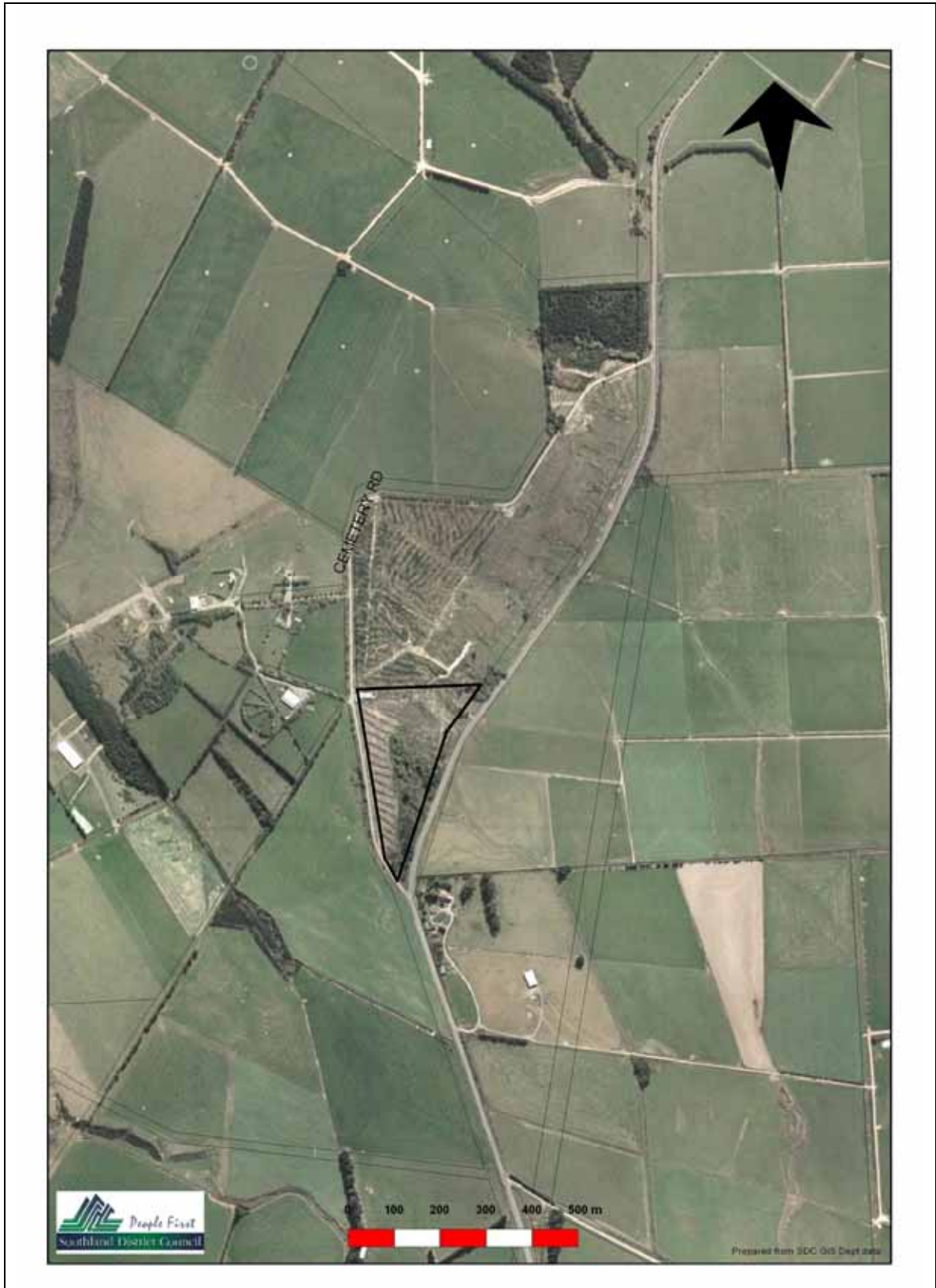
The Hamilton Burn Rest Area off the Wreys Bush Mossburn Road is a small rest area for passing travellers. A fire in the surrounding plantation trees has left this reserve exposed.

Specific Policies

- Continue to manage the Hamilton Burn Rest Area as an area of open space for casual recreation.

Future Development Potential

Status quo.



Hamilton Burn Rest Area

File: 3076/0031

Lumsden Recreation Reserve

Lumsden 1

Description

Location	Iona Street, Lumsden
Classification / Status	Recreation
Area (ha)	11.8472
Legal Description	Secs 1 to 6 Blk XXIII & Secs 1 to 10 Blk XXIX Tn of Lumsden; Secs 10 & 11 Blk XXX , Sec 6-13 Blk XVII Tn of Lumsden.
Control	Lumsden Community Board
Previous Management Plan	This District Wide Reserve Management Plan replaces the 'Lumsden Recreation Reserve Management Plan 1998'
Hierarchy	Township
Adjacent Land	This reserve is on the north west boundary of Lumsden township and is generally surrounded by farmland and residential properties.
Facilities	Rugby pavilion and changing rooms, old unused tennis courts, Camping ground buildings (old Lumsden Jail, small office, ablution facilities, laundry and showers). The reserve contains a small woodlot containing young conifers.
Acquisition	Sections 1-6 Blk XXIII were acquired in 1894. Sections 1-10 Blk XXIX were acquired in 1901. In 1983 the above sections were classified as reserve for recreation purposes. In addition to these Sec 10 and 11 Blk XXX and Secs 6-13 Blk XVII Tn of Lumsden are utilised as part of the Lumsden Reserve.

General Description

This reserve is utilised by the community for a number of organised sporting and recreation activities including rugby, hockey, show jumping and camping. Situated in the northwest boundary of Lumsden. This reserve is divided into two parts, the camping ground and the sports fields, with the main block accessed from Iona and Marion Streets.

Specific Policies

- Continue to develop and maintain the Lumsden Recreation Reserve as an area of open space for organised sport, camping and casual recreation.
- Dogs may be exercised on the Lumsden Recreation Reserve as per the Dog Control Bylaw (1997).
- Camping is permitted within Licensed Camping Grounds only. Camping is prohibited all other areas of Lumsden Recreation Reserve as per the Camping Bylaw (2000).

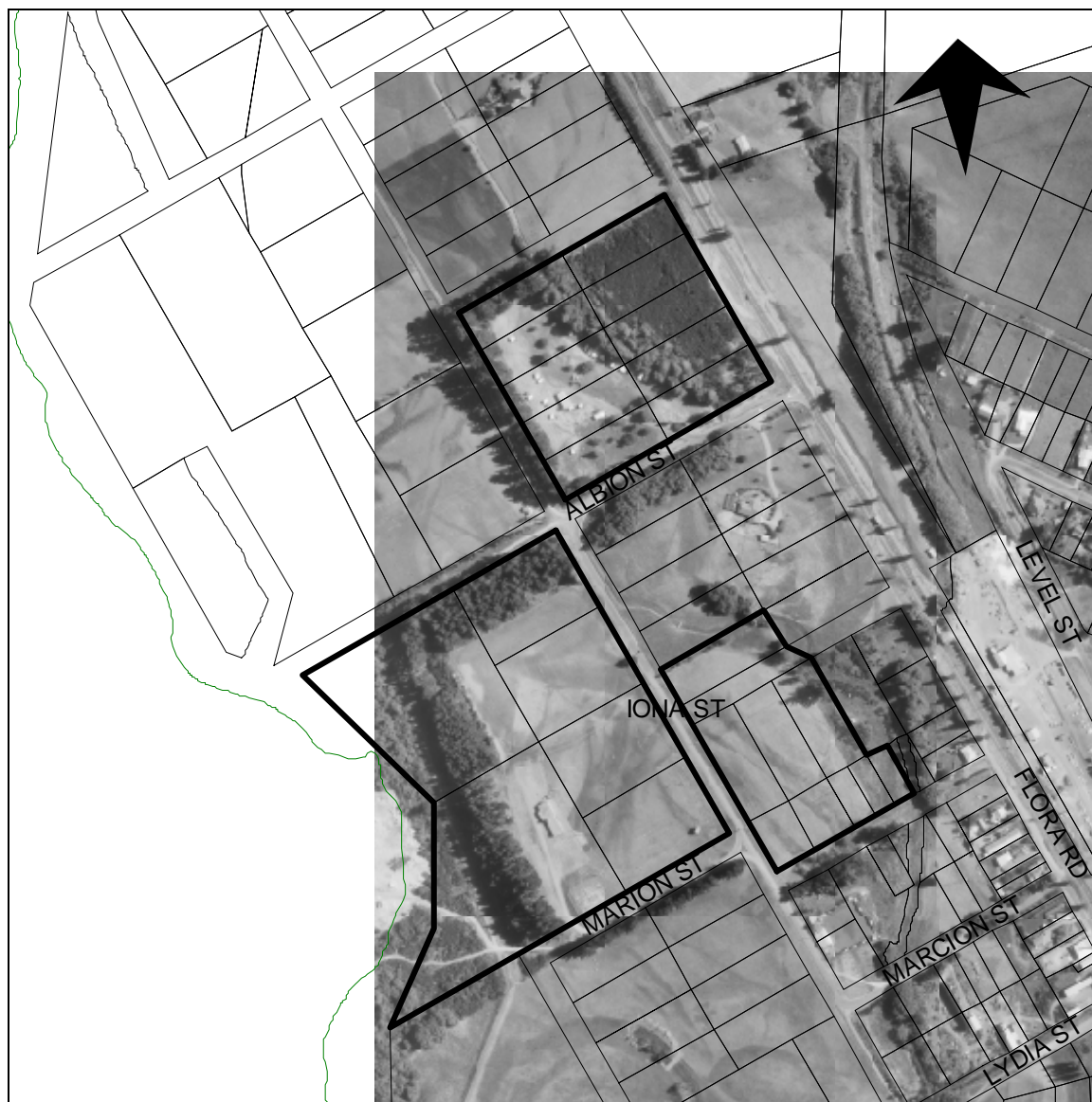
Future Development Potential (from previous Reserve Management Plan)

Investigate removal and replacement options for the tree and shelter plantings within the reserve.

Develop walkway between sports fields, camping ground and river.

Remove weeds from woodlot. Maintain shelter belts.

Lease agreement for camping facilities to be developed.



Lumsden Recreation Reserve

File: 3096/0023

Lumsden Town Centre Reserve

Lumsden 2

Description

Location	Between Diana Street and Hero Street
Classification / Status	Freehold
Area (ha)	3.5832
Legal Description	Lot 1 DP 12125, Lot 4 DP 12125, Sec 7 Blk X Tn of Lumsden
Control	Lumsden Community Board
Previous Management Plan	No
Hierarchy	Township
Adjacent Land	Located directly across the road from the main shopping area the west with residential to the east.
Facilities	Public toilets, playground, car parking, skateboard park, landscaping (old railway station).
Acquisition	Originally part railway reserve land.

General Description

Open space in centre of town between Diana Street and Hero Street. Containing the old Railway Station, landscaping, playground, public toilets and car parking. The playground is of high quality and is well used and maintained.

Specific Policies

- Continue to develop the Lumsden Town Centre Reserve as an area of open space for casual recreation, car parking and children's playground.
- Dogs must be on a leash on the northern section of the Lumsden Town Centre Reserve between Elbow Lane and Flora Road as per the Dog Control Bylaw (1997).
- Dogs are prohibited from the Children's playground on the Lumsden Town Centre Reserve as per the Dog Control Bylaw (1997).
- Camping is prohibited on the Lumsden Town Centre Reserve as per the Camping Bylaw (2000).

Future Development Potential

Landscape Plan required for whole area.

The area open space to the south has the potential to become an attractive entrance to the township from the south with additional specimen plantings.

Car park areas and entrances require landscaping to establish definition and legibility.



Lumsden Town Centre Reserve

File: 3638/0009

Mossburn War Memorial Park

Mossburn 1

<u>Description</u>	
Location	Holmes Street
Classification / Status	Recreation
Area (ha)	5.3180
Legal Description	Lots 1 to 10 Blk II DP 192 & Secs 456 & 520 Blk II Taringatura SD
Control	Mossburn CDA
Previous Management Plan	This District Wide Reserve Management Plan replaces the Mossburn Recreation Reserve Management Plan 1998
Hierarchy	Township
Adjacent Land	The domain is surrounded by road and opposite residential properties.
Facilities	Community Centre, Preschool playground, two rugby grounds, floodlights, scoreboard, old unused changing sheds, hockey pitch, two tennis/one netball courts, adventure playground, public toilets, visitor information board, war memorial entranceway, deer statue.
Acquisition	Lots I-10 Blk II were acquired in 1947 and reserves for recreation purposes as the Mossburn War Memorial Park Domain. Section 456 Blk I was formerly a closed road and was included in the domain as a recreation reserve in 1953. Sec 520 Blk I was declared reserve in 1976.

General Description

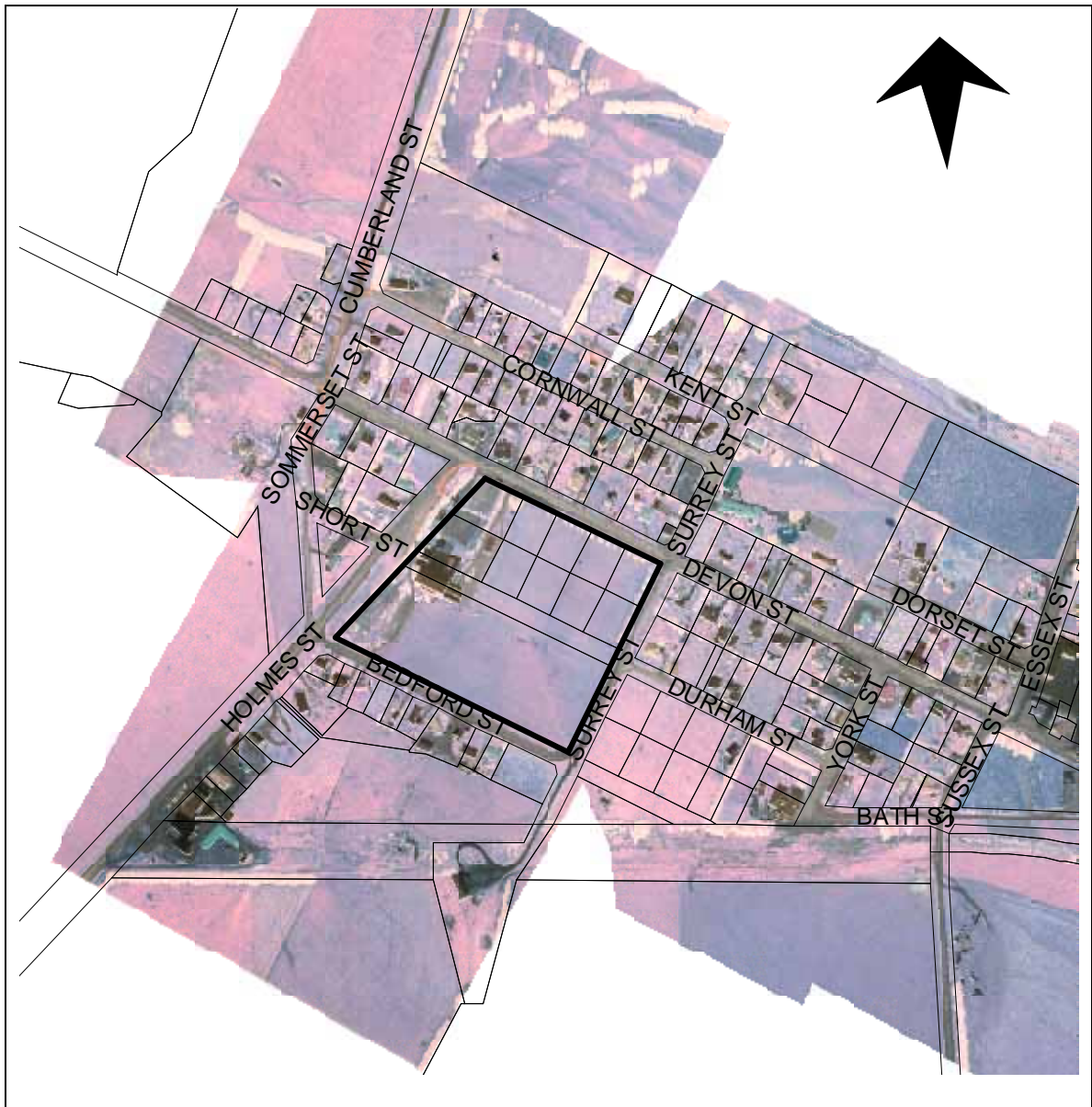
Mossburn War Memorial Park is a well utilised and well maintained reserve for tennis, rugby, hockey and cricket. Other uses involve the community centre and the adventure playground. The Community Centre, a multi purpose building, is the focal point in the community, providing a site for indoor recreational activities and meetings.

Specific Policies

- Continue to manage the Mossburn War Memorial Park as a multi-purpose recreation reserve for active and casual recreation for the benefit and enjoyment of the public.
- Dogs are prohibited on the Mossburn War Memorial Park as per the Dog Control Bylaw (1997)

Future Development Potential

Investigate alternative use for the old pavilion.



Mossburn War Memorial Reserve