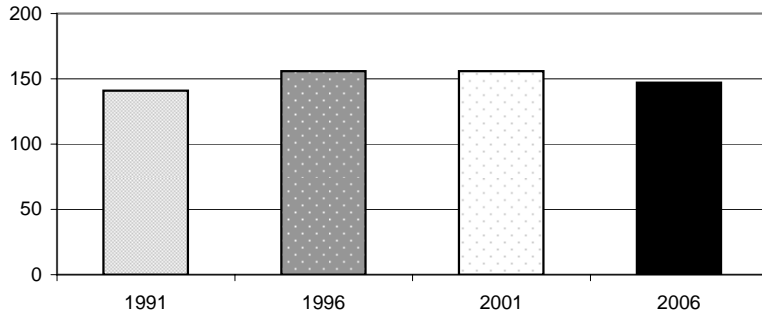


Dipton Demographic Analysis 2006

Source: Statistics New Zealand Census

NB - Totals may be fewer as total usual residents as meshblock data set is small and does not include figures for some areas due to confidentiality rules.

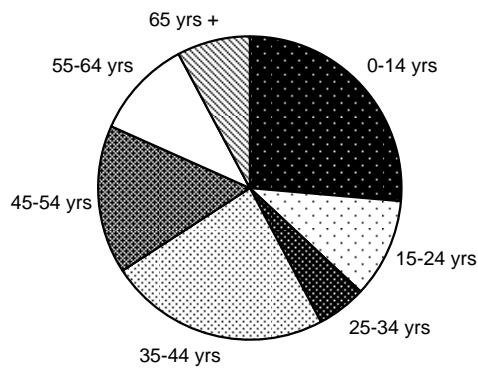
Usually Resident Population



Year	Total	% Change
1991	141	
1996	156	9.6%
2001	156	0.0%
2006	147	-6.1%

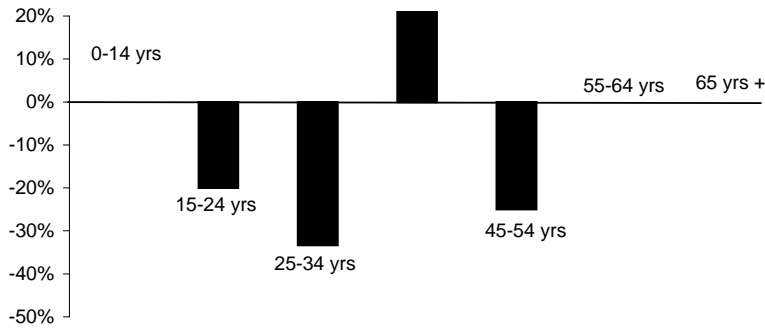
Sex	Total	%
Male	75	51.0%
Female	72	49.0%

Population By Age



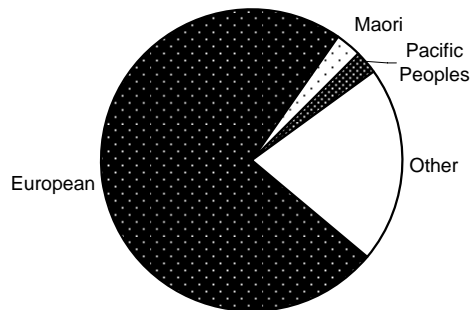
Age Group	Total	%
0-14 yrs	30	26%
15-24 yrs	12	11%
25-34 yrs	6	5%
35-44 yrs	27	24%
45-54 yrs	18	16%
55-64 yrs	12	11%
65 yrs +	9	8%

Change in Age Groups 2001-2006



Age Group	Total Change	% Change
0-14 yrs	0	0%
15-24 yrs	-3	-20%
25-34 yrs	-3	-33%
35-44 yrs	6	29%
45-54 yrs	-6	-25%
55-64 yrs	0	0%
65 yrs +	0	0%

Ethnic Composition

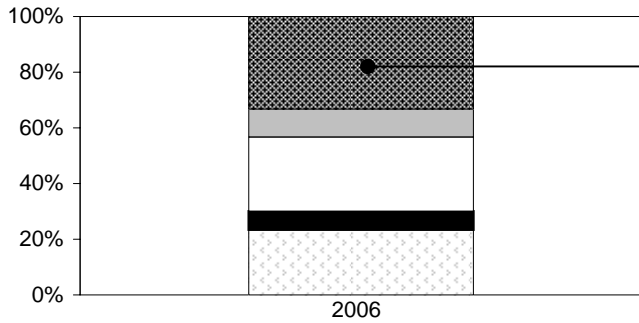


Ethnicity	Total	%
European	84	74%
Maori	3	3%
Pacific Peoples	3	3%
Asian	0	0%
MELAA	0	0%
Other	24	21%

MELAA = Middle Eastern, Latin American and African

NB - as above

Employment Status: 15 Years and Over



	Total	%
Paid Employee	30	33%
Employer	9	10%
Self-Employed	24	27%
Unpaid Worker	6	7%
Not in Labour Force	21	23%
Unemployed	0	0%
Not Stated	0	0%

Total Number of Dwellings and Ownership

	Total	%
Owned or Partly Owned	21	54%
Not Owned	6	15%
Held in Family Trust	12	31%
Not Elsewhere Included	0	0%
Total	39	100%